

PRIMINER

High Performance Machining Center V7L

High performance, high rigidity



V7L

- Fully enclosed tool magazine cover and full enclosure protection for the machine
- More efficient chip removal system
- Optimized coolant tank structure design for better filtration and easier maintenance
- Optimized pipeline installation with drag chain to extend the lifetime



Technical Specifications	V7L
Worktable size	900 × 420 mm
X/Y/Z Travel	760 / 450 / 520 mm
Rapid feed X / Y / Z	48 m/min
Spindle taper	BT40 / SK40 / CAT40
Spindle speed	10000/15000 rpm

Optimum structural design

- High rigidity, good performance

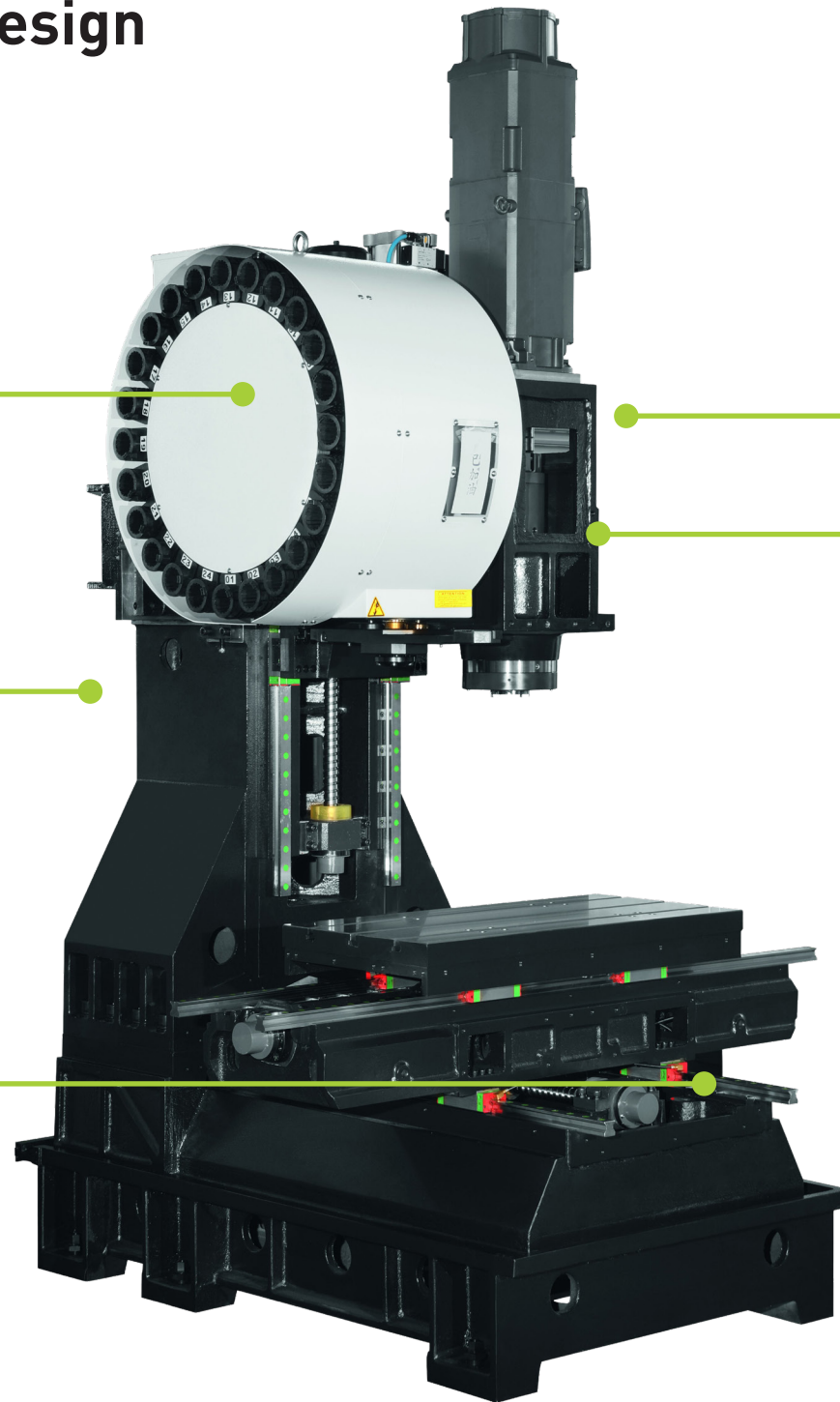
Standard arm type ATC 24 pockets

Extra support base for ATC ensure structural stability

3+2 bearings in each axis

High rigidity of headstock

Well balanced spindle



BLUM MEASURING SYSTEM

Universal High-Speed touch probe with multidirectional measuring mechanism

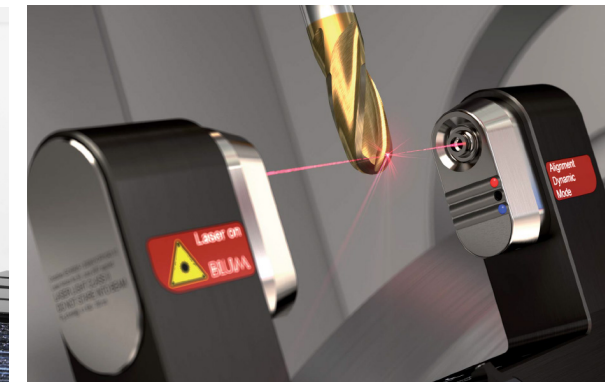
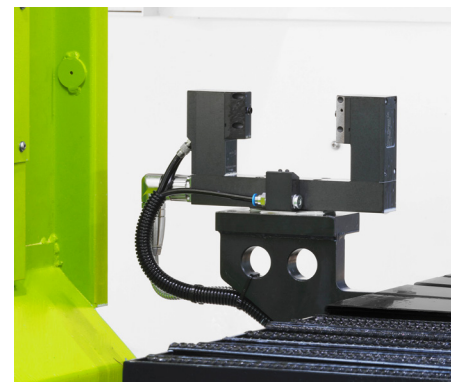
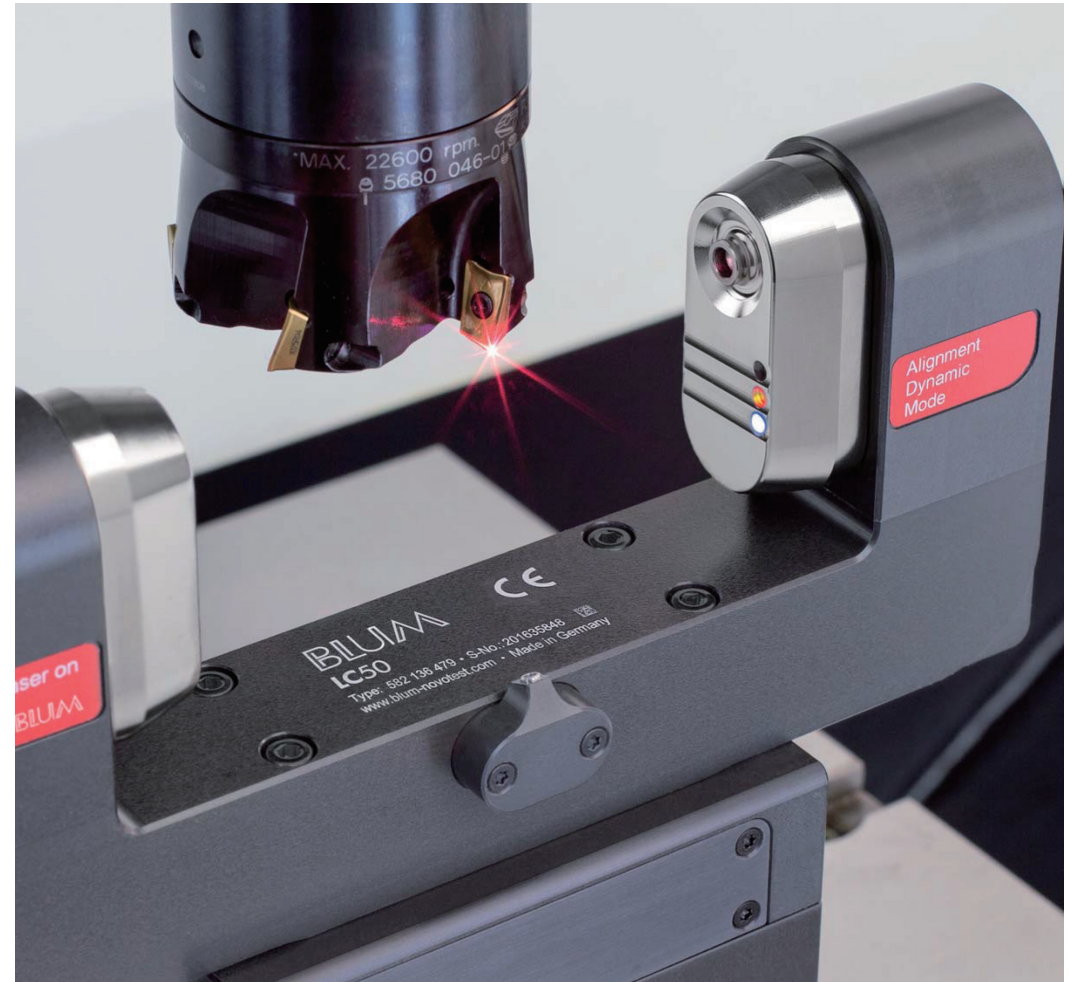
- Detection of workpiece position
- Correction of workpiece orientation
- Thermal compensation of the machine tool
- Contour measurement

Your benefit:

- Measuring speed up to 3 m/min
- Precise, non-lobing touch characteristics
- No-wear, optoelectronic measuring mechanism
- Use of two measuring systems with one IR receiver
- Extended battery life
- Precise measurement even with coolant
- Proven and robust design

Highlights

- Proven high-precision laser measuring system;
- Non-contact, optical tool measurement;
- 100 % reliable due to BLUM protection system



FANUC Series 0i-MODEL F Plus

New World-Standard CNC

As a successor to the Series 0i-MODEL F, the FANUC Series 0i-MODEL F Plus has been released with renewed design, enhanced basic functions and the pursuit of ease of use.

It is equipped with the latest control technology for fine surface machining and reducing cycle time, and with customizable functions that can flexibly create screens.

Reduced cycle time

High-Speed, Fine Surface Machining

Renewed design

Equipped with +HMI (Type 0)

Equipped with FANUC's latest CNC and servo technologies

Comes standard with customizability functions

Extended memory capacity

Consistent Support at Shop Floor

Easily use memory cards as high-capacity program memory devices

Supported Industrial Ethernet/Field Networks

Improvement of the safety of machine tool and machining line



The new CNC-controller for the compact class.

SIEMENS
SINUMERIK 828D

The performance of the SINUMERIK 828D is in a class of its own. Even in the compact frame size, the familiar SINUMERIK state-of-the-art technology ensures the highest possible levels of precision and productivity.

Communications:

- Front interfaces (IP65)
 - RJ45 Ethernet
 - USB 2.0
 - Compact Flash (CF) card

Durable and rugged:

- Panel-based CNC with panel front manufactured out of die-cast magnesium

Everything at a glance:

- 10.4" TFT color display

16 softkeys:

- Using the 8 horizontal and 8 vertical softkeys, you can quickly access all of the operator screen forms with just a few keystrokes

Maintenance-free:

- No battery (continuous data buffering using NV-RAM technology!)
 - No fan
 - No hard disk

User-friendly:

- Full QWERTY keyboard
 - Hard keys with protective foil
 - IP65 degree of protection

Clever:

- Proximity sensor/distance sensor for smart display control



TECHNICAL SPECIFICATION

TECHNICAL SPECIFICATION	V7L		
TABLE			
Table size	900×420mm		
T slot(width×distance×number)	14mm×125mm×3		
Max.load	500kg		
TRAVEL			
X/Y/Z Travel	760 / 450 / 520 mm		
Spindle nose to table	100-620mm		
SPINDLE			
Spindle Taper	SK40 / BT40 / CAT40		SK40 / BBT40 / CAT40
Spindle speed	10000 rpm		15000 rpm
Motor power	9 / 22 kW (SIEMENS)	11 / 18.5 kW (FANUC) ;	8.5 / 33.5 kW (SIEMENS)
Motor torque	63 / 135 Nm (SIEMENS)	52.5 / 118 Nm (FANUC) ;	63 / 135 Nm (SIEMENS)
FEED			
Rapid feed	48 m/min		
Cutting speed	1-12000 mm/min		
Tool changer			
Number of tools	24		
Max. tool length	300 mm		
Max. tool diameter	Φ78 (Φ125) mm		
Max. tool weight	8 kg		
ACCURACY (VDI 3441 /full travel)			
Positioning accuracy	0.008 mm		
Repeatability accuracy	0.006 mm		
DIEMENSION & WEIGHT			
Dimension	3250×2710×2900 mm		
Weight	4500kg		

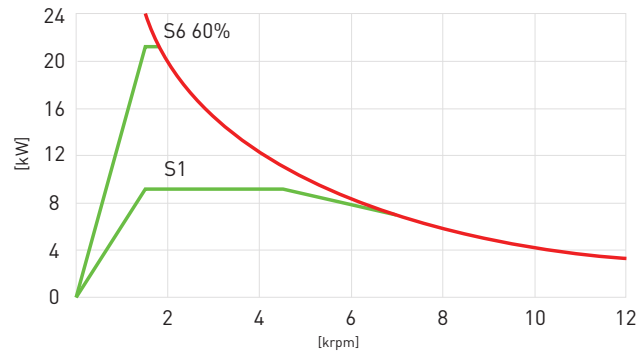
Standard Configuration

- Belt drive spindle BT40/SK40/CAT40 10000 rpm, 9/22kW, 63/135Nm (Siemens)
- Belt drive spindle BT40/SK40/CAT40 10000 rpm, 7.5/15kW, 35.8/95.5Nm (FANUC)
- 24 pockets arm type tool changer, BT40/SK40/CAT40
- Roller type linear guideways on all axis
- Full enclosed splash guard
- Telescopic covers for linear axis
- Chain type chip conveyor
- Spindle oil cooler
- Air-condition electrical cabinet
- Rigid tapping
- Automatic lubrication system
- Air blast during cutting
- LED working lamp
- End of program light
- Electrical handwheel (MPG)
- Tool box
- Leveling bolts and blocks
- Coolant gun
- Air gun
- User manual (mechanical + electrical parts)
- Ethernet, CF card and USB interface

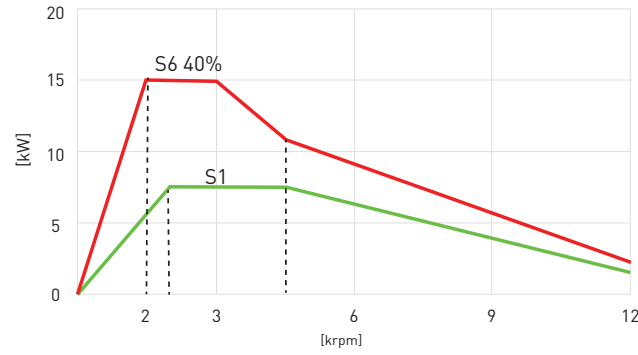
Optional Configuration

- Direct drive spindle BBT40/SK40/CAT40 12000 rpm, 9/22kW, 63/135Nm
- Direct drive spindle BBT40/SK40/CAT40 12000 rpm, 11/18.5kW, 52.5/118Nm
- Direct drive spindle BBT40/SK40/CAT40 15000 rpm, 8.5/33.5kW, 63/135Nm
- 28 pockets arm type tool changer, BT40/SK40/CAT40
- 30 pockets arm type tool changer, BT40/SK40/CAT40
- Additional rotary 4th axis
- CTS Coolant through spindle + ATS
- Oil mist collector
- Tool probe
- Oil skimmer
- Extra 200GB SSD program memory (only available on SIEMENS)

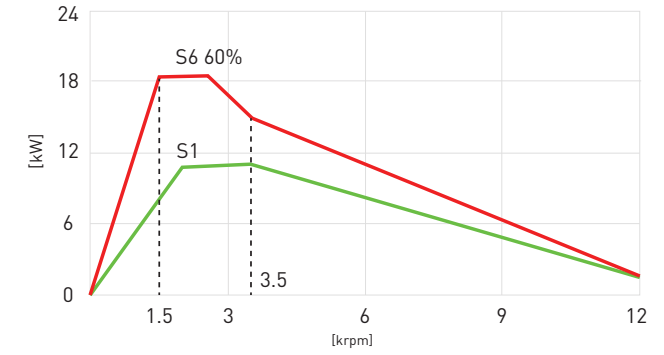
TORQUE DIAGRAM



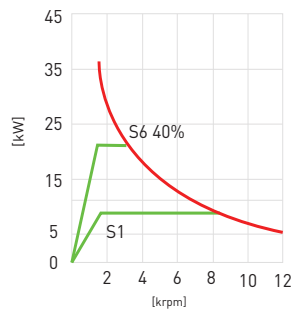
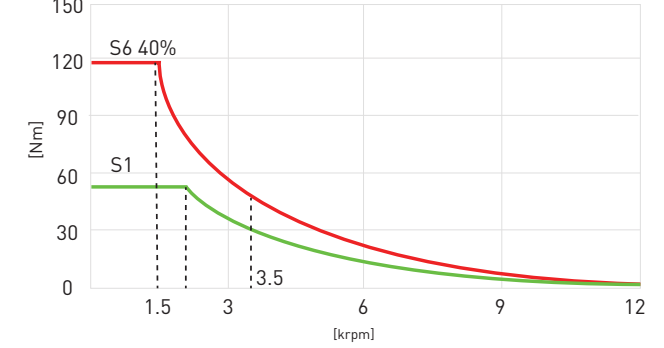
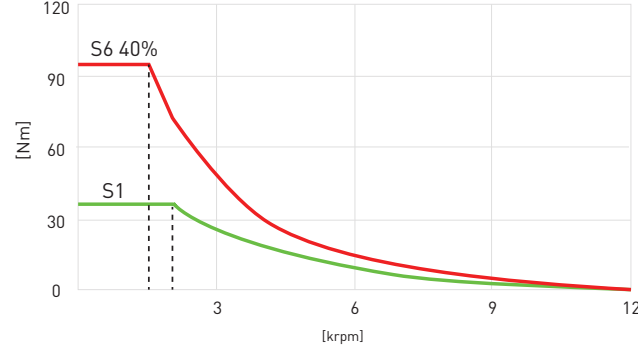
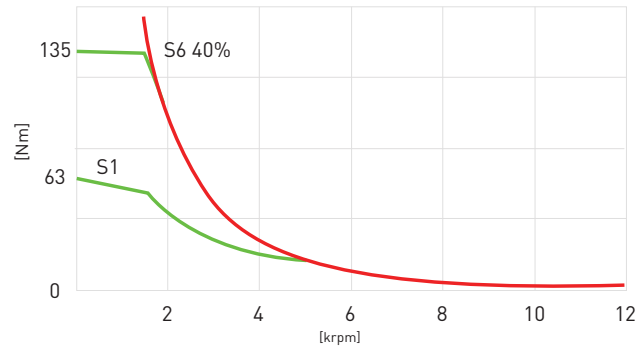
BT40 / SK40 / CAT40 10,000/12,000rpm
9/22 kW 63/135 Nm
Siemens



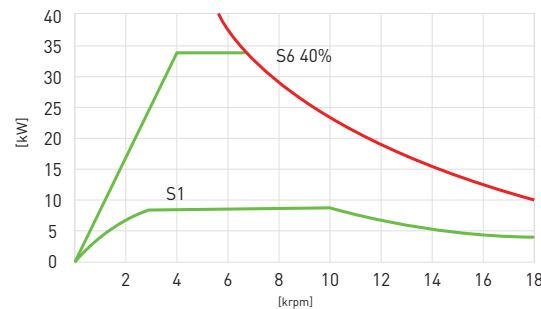
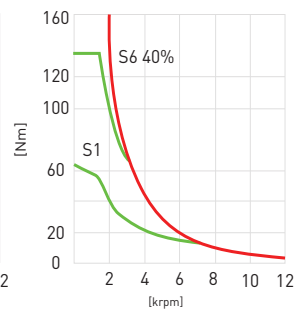
BT40 / SK40 / CAT40 10,000rpm
7.5/15 kW 35.8 / 95.5 Nm
FANUC



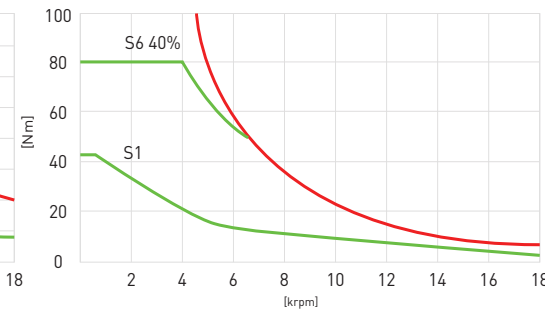
BBT40 / SK40 / CAT40 12,000rpm
11/18.5 kW 52.5/118 Nm
FANUC



Y connection 12,000rpm
8.5/21.2 kW 63/135 Nm



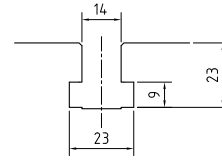
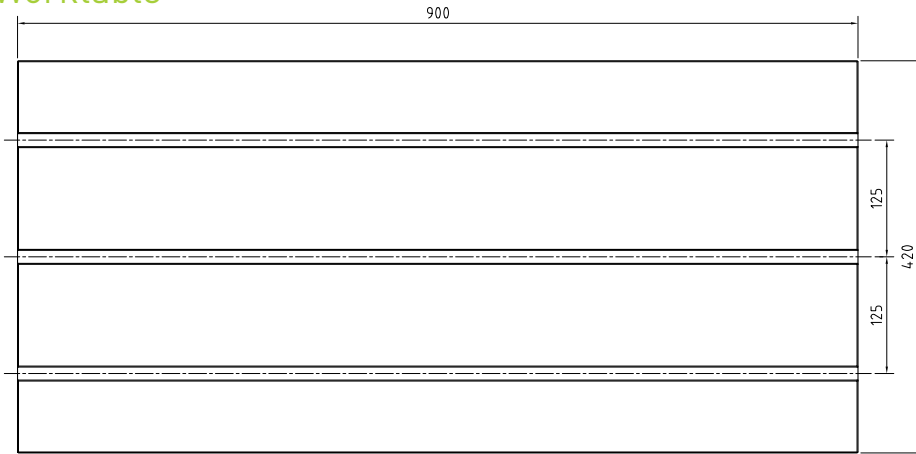
BBT40 / SK40 / CAT40 15000rpm
8.5 / 33.5 kW 63 / 135 Nm
Siemens



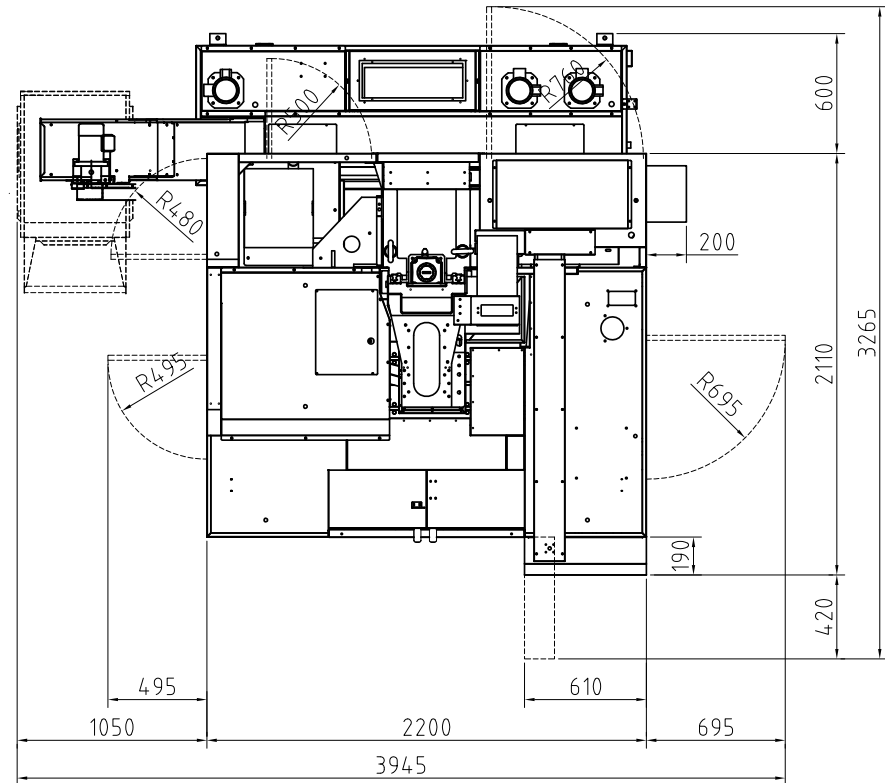
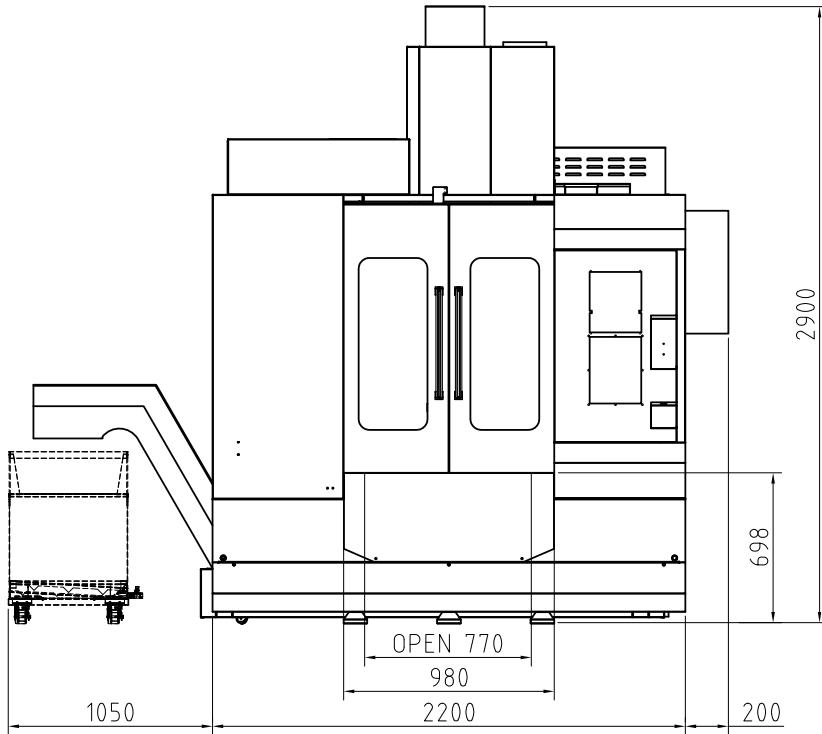
Δ connection 15,000rpm
8.5/33.5 kW 42/80 Nm

DIMENSIONS

Worktable



Dimensions



OUR SUPPLIERS

SIEMENS **FANUC**

SKF *HIWIN*[®]

SVC **NSK**



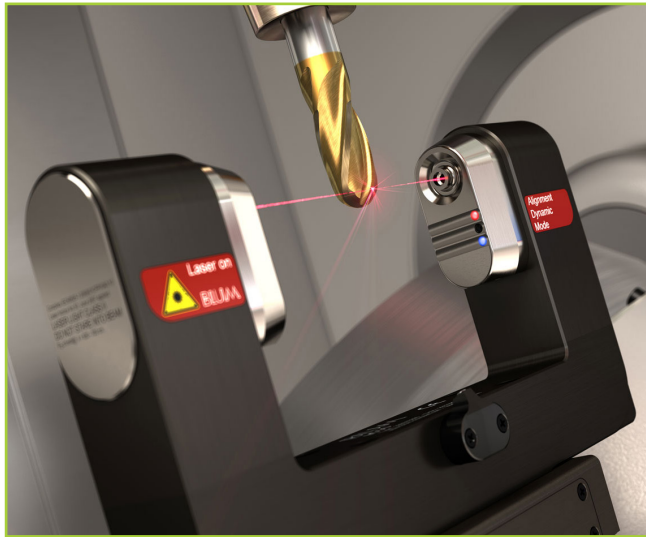
BLUM
focus on productivity

WAGO

FAG



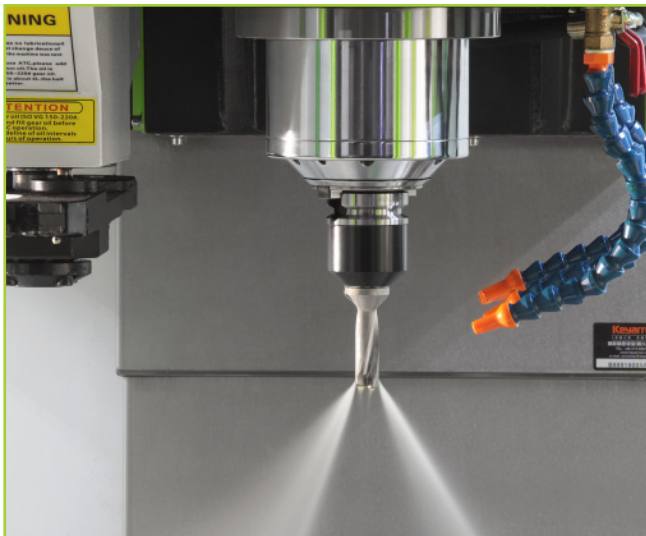
OPTIONS



Tool and workpiece probe



Oil mist collector



CTS coolant through spindle



Oil skimmer

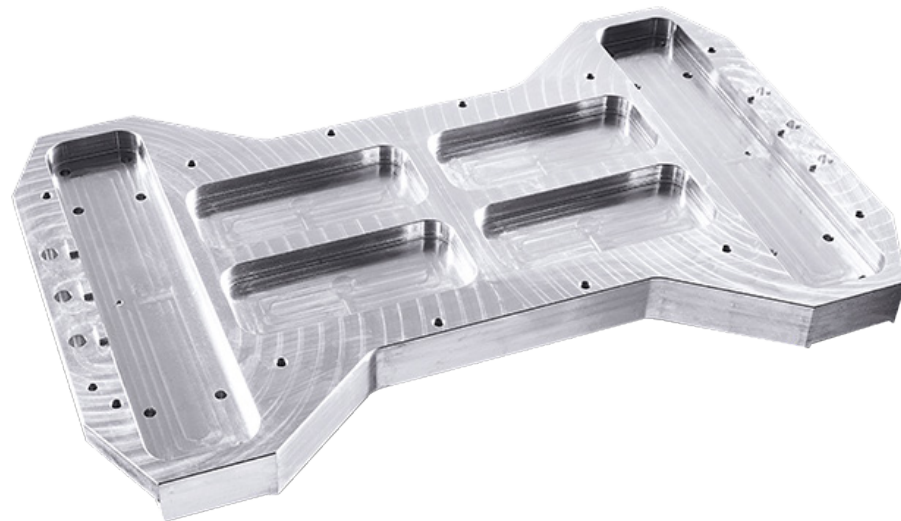
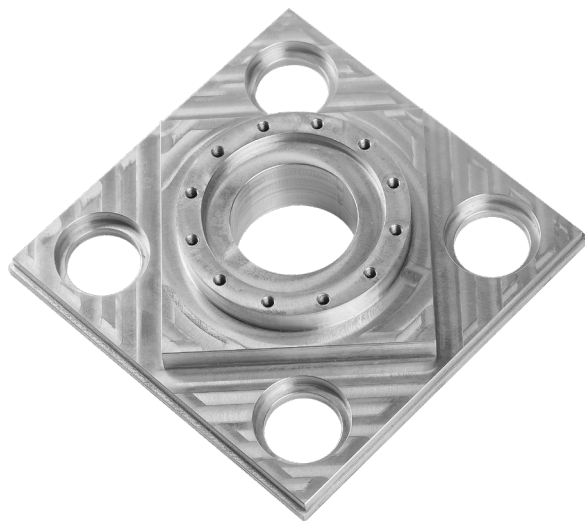
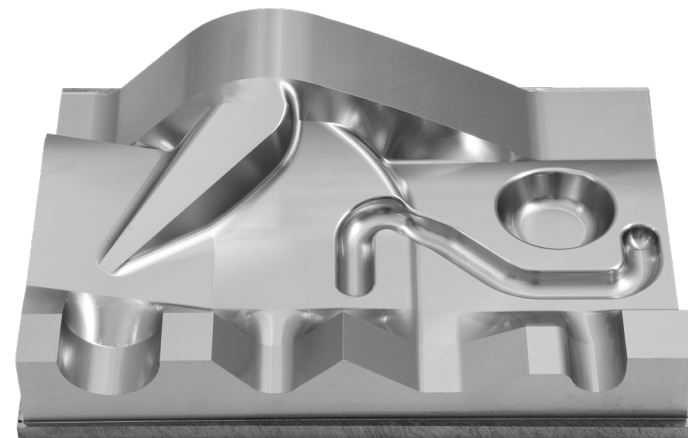
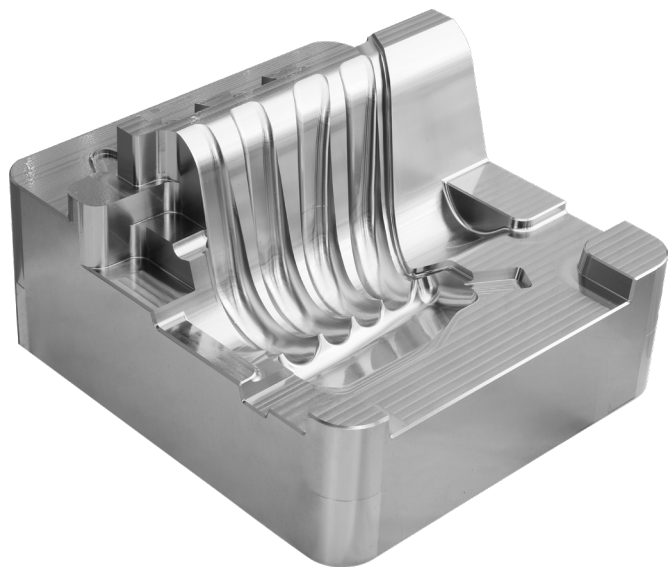


PRIMINER

C500
5 Axis Center

PRIMINER INTERNATIONAL
TEAM

WORKPIECE SAMPLES





PRIMINER Werkzeugmaschinen GmbH

Tungendorfer Str.10 · 24536 Neumünster / German
Tel: +49 (0) 4321-25 20 03-0
E-Mail: info@priminer.de

PRIMINER SOUTH EAST EUROPE
PRIMINER d.o.o. BEOGRAD

Tungendorfer Str.10 · 24536 Neumünster / German
Tel: +49 (0) 4321-25 20 03-0
E-Mail: info@priminer.de

PRIMINER MACHINE TOOLS DONGGUAN CO., LTD

XinRuYi Industrial Park, Fuxing Road, Xingguang
Village,
Huangjiang Town, Dongguan, P.R.China
Tel: +86 769 838 490 61
Fax: +86 769 838 490 62
E-Mail: info@priminer.com

PRIMINER USA

South Carolina
E-Mail: sales@priminerusa.com

PRIMINER Thailand

8 Chaloe Phrakiat Ratchakan Thi 9 Soi 30 Yaek
23, Dok Mai, Prawet, Bangkok 10250thailand
E-Mail: info@priminer.de



<https://www.priminer.de>